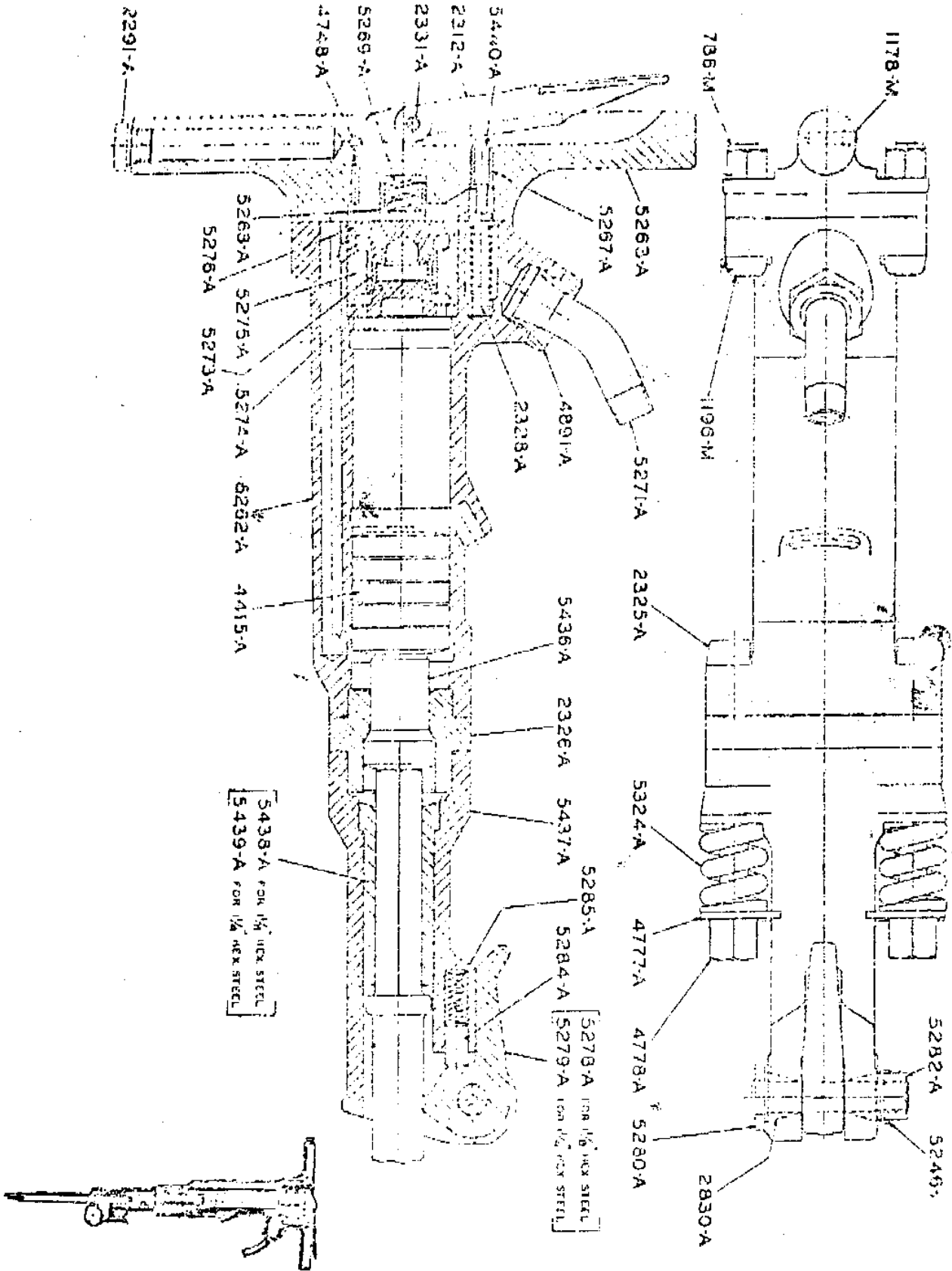


WORTHINGTON WB-82 90LB HAMMER



NR-17600

11-6155

For Parts Call Tools Renewed (800) 247-3639 Fax (860) 665-9821

WB-82 GREASER - LIST OF PARTS

PART NO.	NAME OF PART	NO. REQ.
Handle and Parts		
5263-A	Handle	1
5268-A	Valve Retaining Plunger	1
5269-A	Valve Retaining Plunger Spring	1
Built in Lubricator Parts		
2291-A	Oil Plug	1
4748-A	Oiler Felt	1
1178-M	Oil Felt Plug	1
Throttle Valve Parts		
2312-A	Throttle Valve Handle	1
2331-A	Throttle Valve Handle Pin	1
5440-A	Throttle Valve	1
2328-A	Throttle Valve Spring	1
5267-A	Throttle Valve Bushing	1
Handle Bolt Parts		
1198-M	Handle Bolt	4
766-M	Handle Bolt Nut	4
Cylinder and Parts		
5262-A	Cylinder	1
5271-A	Air Inlet Swivel	1
4991-A	Swivel Bushing	1
5273-A	Valve	1
5274-A	Valve Plate	1
5275-A	Valve Box	1
5276-A	Valve Cover	1
762-M	Down Pin	1
4415-A	Piston	1
2360-A	Anvil Block Housing	1
5456-A	Anvil Block	1
Front Head Parts		
2325-A	Front Head Bolt	2
4770-A	Front Head Bolt Nut	2
4777-A	Front Head Bolt Washer	2
5324-A	Front Head Bolt Spring	2
5437-A	Front Head	1
5439-A	1-1/4 in. Front Head Bushing	1
5438-A	1-1/8 in. Front Head Bushing	1
5279-A	1-1/4 in. Retainer	1
5278-A	1-1/8 in. Retainer	1
5280-A	Retainer Bolt	1
5281-A	Retainer Bolt Nut	1
5282-A	Retainer Lockwasher	1
5283-A	Cam Washer	1
5284-A	Index Pin	1
5285-A	Index Spring	1