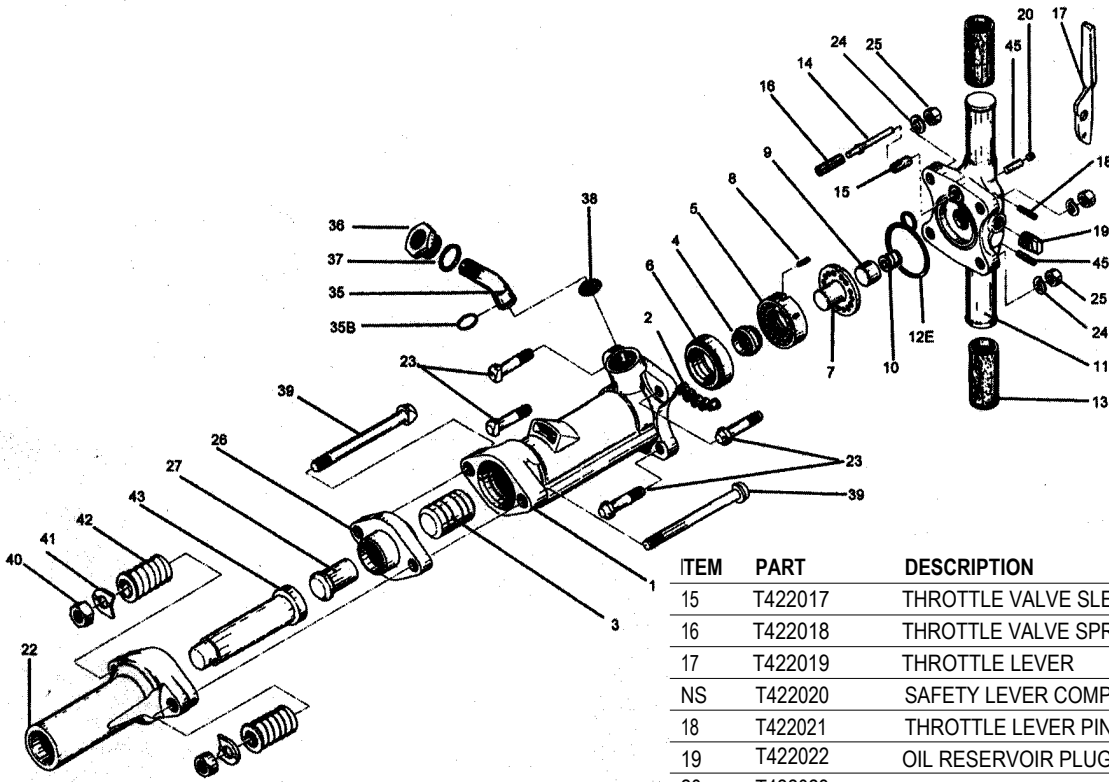


Tools Renewed Air Tool Parts  
 800-247-3639  
 Fax: 860-665-9821



# 125SD - SPIKE DRIVER



ITEM	PART	DESCRIPTION
1	T422001	CYLINDER
2	T422002	CYLINDER PLUGS (X5)
3	T422003	PISTON
4	T422004	AUTOMATIC VALVE
5	T422005	VALVE CHEST
6	T422006	VALVE SEAT
7	T422007	VALVE GUIDE
8	T422008	VALVE DOWEL PIN
9	T422009	BACKHEAD PLUNGER
10	T422010	BACKHEAD PLUNGER SPRING
11	T422011	BACKHEAD BARE
NS	T422012	BACKHEAD ASSEMBLY COMPLETE
12E	T422013	BACKHEAD O-RING
NS	T422014	BACKHEAD VALVE PORT O-RING
13	T422015	BACKHEAD VALVE PORT O-RING
14	T422016	THROTTLE VALVE

ITEM	PART	DESCRIPTION
15	T422017	THROTTLE VALVE SLEEVE
16	T422018	THROTTLE VALVE SPRING
17	T422019	THROTTLE LEVER
NS	T422020	SAFETY LEVER COMPLETE
18	T422021	THROTTLE LEVER PIN (X2)
19	T422022	OIL RESERVOIR PLUG
20	T422023	OIL CONTROL FELT PLUG
22	T422024	FRONTHEAD - SPIKE DRIVER
23	T422025	BACKHEAD BOLT (X 4 )
24	T422026	BACKHEAD BOLT WASHER (X 4 )
25	T422027	BACKHEAD BOLT NUT (X 4 )
26	T422028	TAPPET SEAT
27	T422029	TAPPET
35	T422030	AIR INLET SWIVEL
35B	T422031	AIR INLET SWIVEL O-RING
36	T422032	AIR INLET SWIVEL NUT
37	T422033	SWIVEL NUT O-RING
38	T422034	AIR INLET SCREEN
39	T422035	FRONTHEAD BOLT (X2)
40	T422036	FRONTHEAD BOLT NUT (X 2 )
41	T422037	FRONTHEAD BOLT LOCKWASHER
42	T422038	FRONTHEAD BOLT SPRING (X 2 )
43	T422039	SPIKE DRIVER DOLLY
45	T422040	OIL CONTROL FELT
NS	T422041	OIL TANK PLUG
NS	T422042	MUFFLER ASSEMBLY

**WARNING**

ALWAYS DISCONNECT THE AIR SUPPLY BEFORE ATTEMPTING TO CHANGE A CHISEL, MOIL, ASPHALT CUTTER OR OTHER ACCESSORY ON A PNEUMATIC TOOL OR BEFORE CARRYING OUT ANY MAINTENANCE OR REPAIR WORK ON THE TOOL.

THE CYLINDER OF THIS TOOL IS HARDENED AND SHOULD NOT BE WELDED UNDER ANY CIRCUMSTANCES. WELDING CAN CAUSE LOCAL SOFTENING.