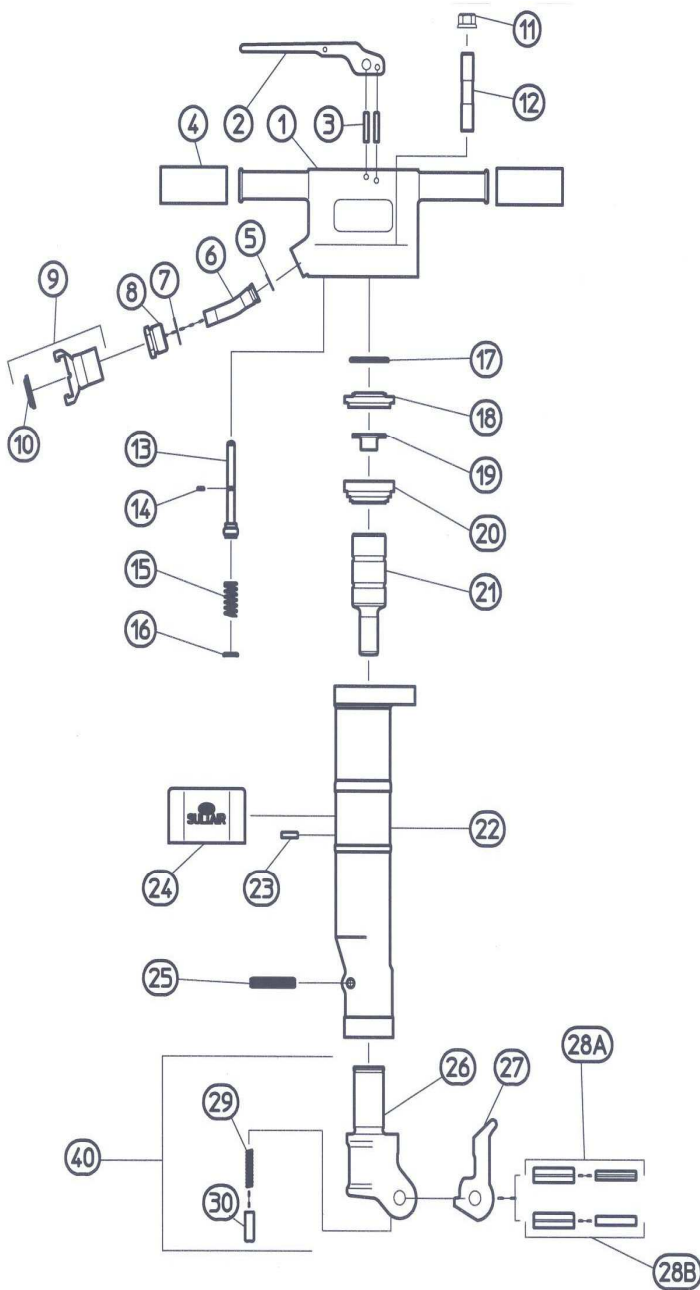


**Parts for Sullair MPB-35C & MPB-35D Paving Breaker  
 (35 lbs)**



Index	Part No.	Description
1	68723109	Handle, Bare
2	68723110	Lever, Throttle
3	68723013	Pin, Lever
4	68723111	Grip, Rubber
5	68CJ0012	O-Ring
6	68722381	Swivel, Inlet
7	68CJ0018	O-Ring
8	68722382	Nut, Inlet
9	02250140-797	Coupling, Universal
10	250012-228	Gasket, Hose Coupling
11	68VE9016	Nut, Back Head
12	68722414	Stud, Back Head
13	68722785	Valve, Throttle
14	68CJ0005	O-Ring
15	68MR1600	Spring, T. Valve
16	69CJ0820	O-Ring
17	68CJ0034	O-Ring
18	68722739	Chest, Valve
19	68722740	Valve, Auto
20	68722738	Seat, Valve
21	68723102	Piston
22	68723211	Cylinder
23	68524129	Pin, Deflector
24	68722741	Defector, MPB-35C
40	68780224	Fronthead, 1in with Complete with Latch Assy
26	68723007	Bushing & Fronthead 1in
27	68723212	Steel Retainer
28A	68780367	Pin Kit (MPB-35B & C)
28B	68780394	Pin Kit (MPB-35D)
29	68MR0707	Spring, Plunger
30	68722737	Plunger, Retainer