

# MPB-30, MCD-30 AND MTD-30 ILLUSTRATION

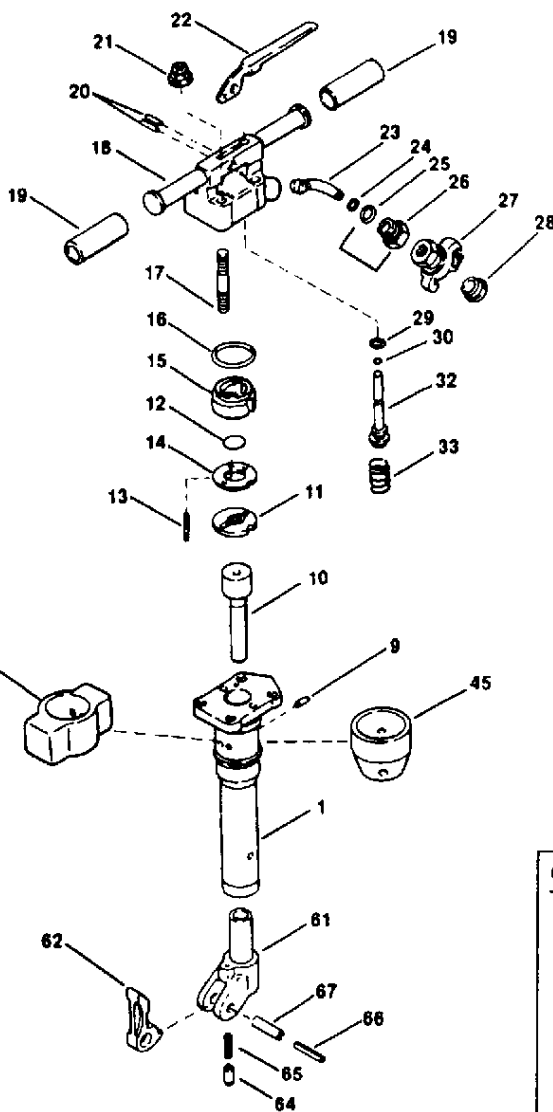
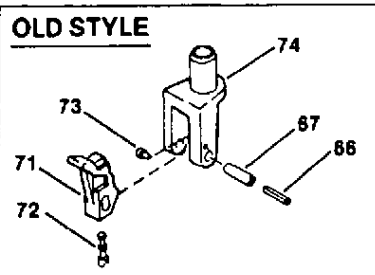
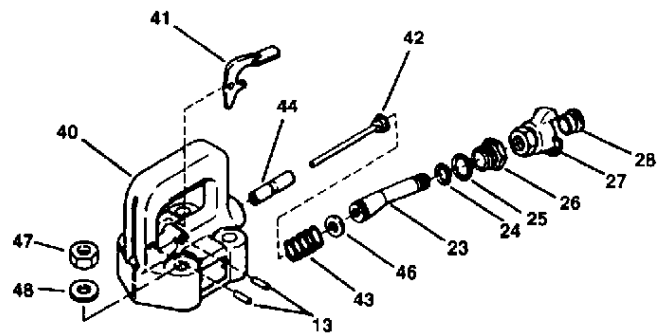


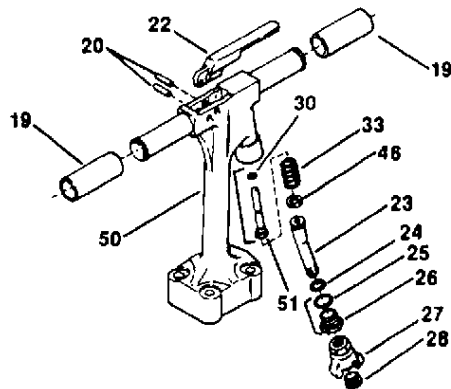
Illustration depicts current design. Refer to Parts List for interchangeability with other models.



## Clay Digger



## Trench Digger





## ON-THE-JOB TROUBLE SHOOTING

### MPB-30 PAVING BREAKER, MCD-30 CLAY DIGGER AND MTD-30 TRENCH DIGGER

PROBLEM	PROBABLE CAUSE	REMEDY
Tool Runs Sluggish	Low Air Pressure at Tool	Increase Pressure to 90-100 PSI (6.2 to 6.9 bar)
	Insufficient Air Flow (CFM [bar])	Check Hoses, etc. for Leaks
	Automatic Valve Clogged	Flush Tool with Mixture of Oil and Diesel Fuel
	Insufficient Lubrication	Add a Small Amount of Light-Weight Non-Detergent Oil into Hose. Refill oil reservoir.
Tool Runs Erratically	Osha (Velocity Valve) Tripping	Inspect Valve for Proper Sizing
	Foreign Material in Tool Inlet	Remove Foreign Material
	Automatic Valve Sticking	Flush Tool With Mixture of Oil and Diesel Fuel. Reduce Amount of Oil/Moisture to Tool
Tool Will Not Run (Air Blows thru Exhaust)	Automatic Valve Stuck	Flush Tool with Mixture of Oil and Diesel Fuel
Tool Continues to Run	Throttle Valve Stuck	Flush Tool with Mixture of Oil and Diesel Fuel
Excessive Kick-Back	Air Pressure Too High at Tool	Reduce Pressure to 90-100 PSI (6.2 to 6.9 bar)
	Dull Cutting Edge on Steel	Replace with Sharp Steel
Difficulty Removing Steel from Work	Wedge Action of Point Negated	Break Closer to Open Edge
	Improper Cutting Edge Profile	Select Appropriate Edge
Slow Penetration	Improper Down Pressure	Apply Sufficient Down Pressure
If suggested remedies fail to correct problem, disassembly and inspection must be performed to determine cause.		

For Parts & Repairs Call Tools Renewed (800) 247-3639 Fax(860-665-9821