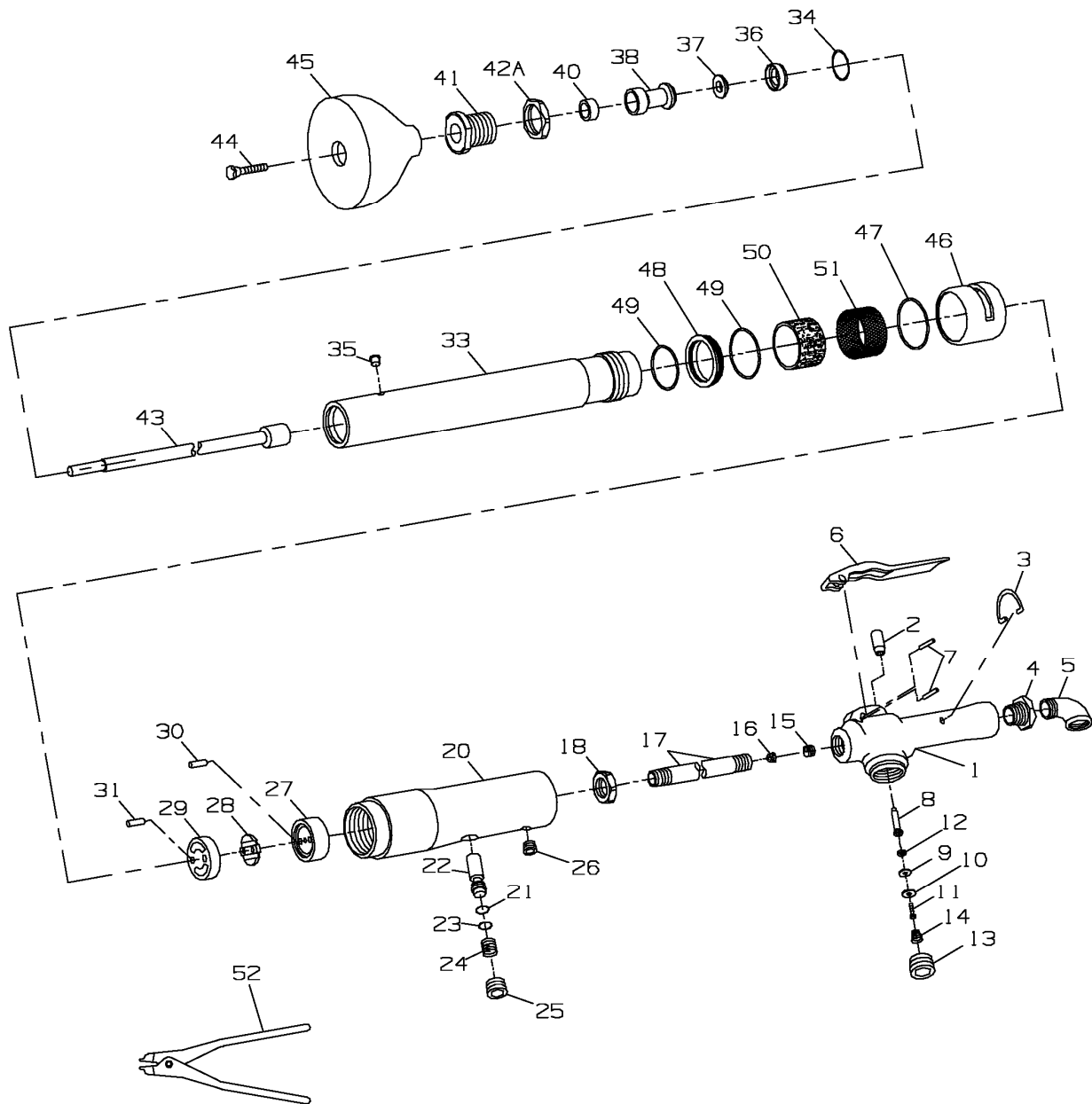


INGERSOLL-RAND MODELS 341 & 441 AIR TAMPERS



Specifications

Model	Bore / Stroke	Blows Per Min	Weight	Length Overall
341	1-5/8 / 4"	725	30 lbs	53"
441	2" / 4"	1750	42 lbs	51"

INGERSOLL-RAND MODELS 341 & 441 AIR TAMPERS

Index	Description	IR-341	IR-441
1	Throttle Handle Body	150SR-160	150SR-160
2	Throttle Valve Bushing	150SR-503	150SR-503
3	Throttle Valve Lock Ring	2T-56	2T-56
4	Reducing Bushing (1/2" to 3/8")	13SR-9	13SR-9
5	3/8" Street Elbow	12SR-8	12SR-8
6	Throttle Lever	33SR-163	33SR-163
7	Throttle Lever Pin or Throttle Lever Stop Pin (2)	504OT-962	504OT-962
8	Throttle Valve	150SR-302	150SR-302
9	Throttle Valve Face	MT4-159	MT4-159
10	Throttle Valve Face Cap	R4-157	R4-157
11	Throttle Valve Face Retaining Screw	4U-359	4U-359
12	Retaining Screw Lock Washer	H54U-352	H54U-352
13	Throttle Valve Cap	DLC-165	DLC-165
14	Throttle Valve Spring	150SR-262	150SR-262
15	Screen Retaining Spring	241SR-5	241SR-5
16	Air Strainer Screen	434-61	434-61
17	Handle Standard Length (19-1/2") (3/4" NPT Male both ends) ..	34SR-1A	34SR-1A
	Handle Extra Long (26") - Optional	341SR-201	341SR-201
18	Handle Lock Nut	241SR-118	241SR-118
20	Head Block	341SR-14	441SR-14
21	Lubricator Valve Seat	R18L-14	R18L-14
22	Lubricator Valve	241SR-101	441SR-101
23	Lubricator Valve Face	ROAR-210	ROAR-210
24	Lubricator Valve Spring	24SR-106	24SR-106
25	Lubricator Valve Cap	HH-266	HH-266
26	Oil Chamber Plug	ROH-377	ROH-377
27	Valve Box Cap	33SR-43	441SR-43
28	Valve	33SR-40	441SR-40
29	Valve Box	341SR-41	441SR-41
30	Valve Box Cap Dowel (2)	33SR-45	33SR-45
31	Valve Box Dowel (2)	DO1-527	DO1-527
33	Barrel for Piston with Round Rod	341 SR-R10	441 SR-R10
34	Seal Support Gasket	P250-283	R38-311
35	Grease Fitting	130SR-188	130SR-188
36	Seal Support	341 SR-28	441 SR-28
37	Rod Rear Seal	341SR-30	441 SR-30
38	Piston Rod Guide	341 SR-A32A	441 SR-A32A
40	Rod Front Seal	341 SR-31	441 SR-31
41	Guide Retainer	341 SR-33A	441 SR-33A
42	Locking Nut	341SR-17	441SR-17
43	Piston with Round Rod Standard Size	341 SR-R20	441 SR-R20
44	Butt Lock Screw	34SR-85	441 SR-85
45	Malleable Butt 5-3/4" diameter (Lock-Type)	34SR-M183-5-3/4	44SR-M183-5-3/4
	Muffler Kit	341SR-K123	
46	Exhaust Deflector Assembly	341SR-A123	
47	Deflector Seal	341 SR-312	
48	Deflector Retainer Assembly	341SR-A124	
49	Deflector Retainer Seal (2)	538-316	
50	Exhaust Silencer	341SR-311	
51	Deflector Screen	241SR-122	
52	Exhaust Deflector Pliers	34SR-54	34SR-54
*	Steel Butt (3" diameter)	34SR-383	
*	Male Hose Nipple (1/2" hose to 3/8" male pipe)	AV1-46	AV1-46