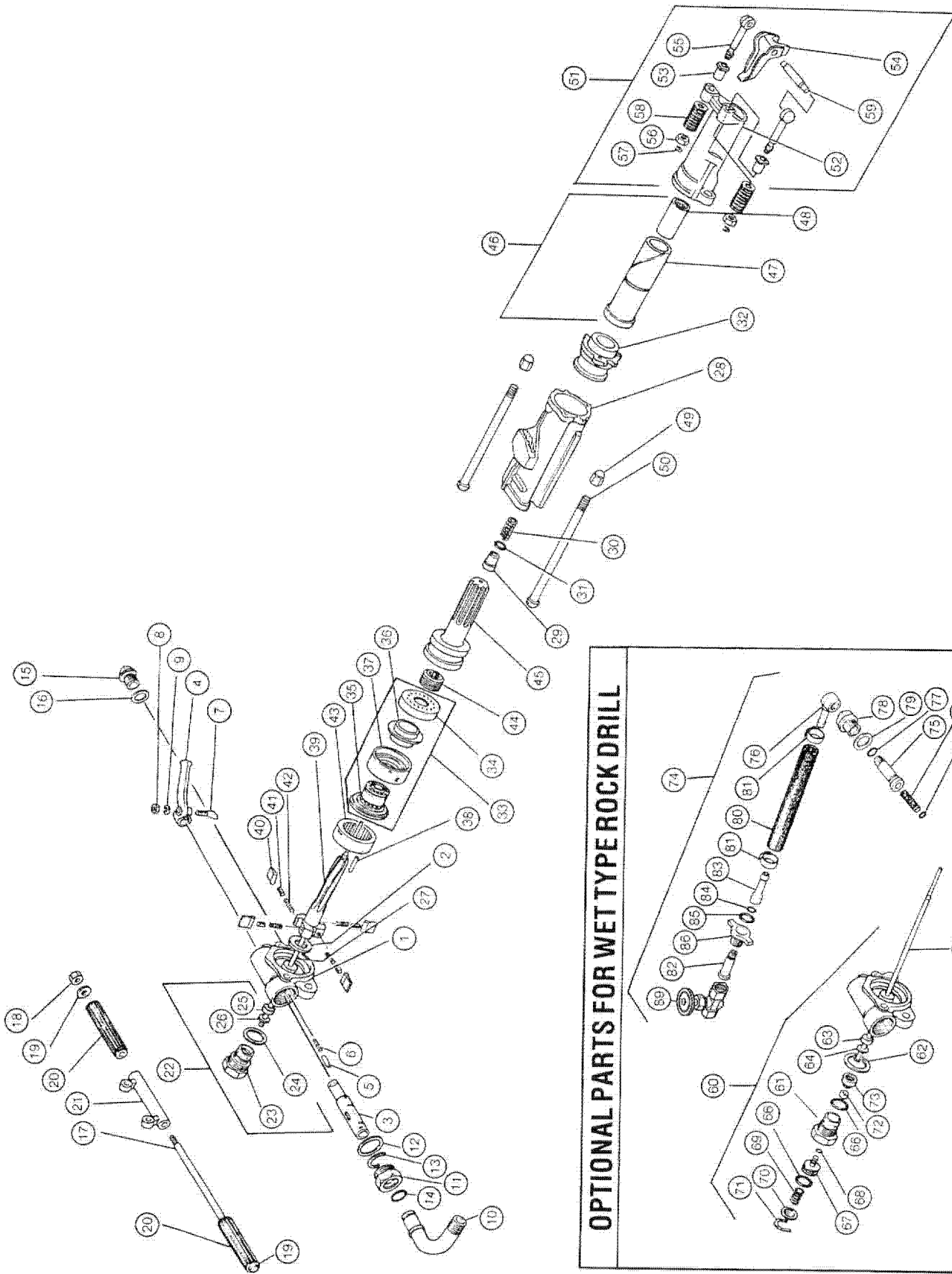


MODEL CRD-55

ROCK DRILL



MODEL CRD-55

ROCK DRILL

| INDEX NO. | PART NO. | DESCRIPTION | QUAN. REQD. |
|-----------|--------------|---------------------------------------|-------------|
| 1 | 7810-01-010C | Back Head Assy. (incl.7825-01-015A) | 1 |
| 2 | 7825-01-015A | Back Head Washer | 1 |
| 3 | 7825-01-0020 | Throttle Valve | 1 |
| 4 | 7825-01-003C | Throttle Valve Handle | 1 |
| 5 | 7825-01-004C | Throttle Valve Plunger | 1 |
| 6 | 7898-17-0110 | Throttle Valve Spring | 1 |
| 7 | 7825-01-0060 | Throttle Valve Bolt | 1 |
| 8 | 9913-23-5000 | Hex. Nut | 1 |
| 9 | 9920-13-5000 | Spring Washer | 1 |
| 10 | 7825-01-808A | Hose Connection Tube | 1 |
| 11 | 7825-01-8090 | Hose Connection Cap | 1 |
| 12 | 7825-01-0110 | Hose Connection Gasket | 1 |
| 14 | 9954-80-0210 | O-Ring 21 | 1 |
| 15 | 7825-02-0130 | Back Head Set Screw | 1 |
| 16 | 7825-01-0140 | Set Screw Gasket | 1 |
| 17 | 7820-05-0230 | Handle Bolt | 1 |
| 18 | 7811-05-0240 | Handle Bolt Nut | 1 |
| 19 | 9920-36-0000 | Plain Washer | 2 |
| 20 | 7811-05-020B | Handle Grip | 2 |
| 21 | 7810-06-025A | Short "D" Handle | 1 |
| 22 | 7825-11-0000 | Blow Tube Group | 1 |
| 23 | 7825-11-031A | Blow Tube Gland | 1 |
| 24 | 7825-10-0330 | Tube Gland Gasket | 1 |
| 25 | 7825-10-0340 | Tube Gasket | 1 |
| 26 | 7825-10-0350 | Tube Washer | 1 |
| 27 | 7825-11-0360 | Blow Tube | 1 |
| 28 | 7820-21-050F | Cylinder | 1 |
| 29 | 7825-21-063A | Blow Air Connection | 1 |
| 30 | 7898-17-0220 | Blow Air Connection Spring | 1 |
| 31 | 9954-80-0120 | O-Ring 12 | 1 |
| 32 | 7825-20-0690 | Front Washer | 1 |
| 33 | 7820-31-0000 | Valve Group | 1 |
| 34 | 7825-30-0710 | Valve Chest Cover | 1 |
| 35 | 7820-30-0720 | Valve Guide | 1 |
| 36 | 7820-31-0730 | Valve | 1 |
| 37 | 7825-30-0750 | Valve Chest | 1 |
| 38 | 7825-42-0810 | Valve Key | 1 |
| 39 | 7825-42-382A | Rifle Bar | 1 |
| 40 | 7825-42-083C | Rotation Pawl | 4 |
| 41 | 7828-40-084A | Pawl Plunger | 4 |
| 42 | 7898-17-0840 | Pawl Spring | 4 |
| 43 | 7825-42-0860 | Rotation Ratchet | 1 |
| 44 | 7825-52-101B | Rifle Nut | 1 |
| 45 | 7825-52-103B | Piston | 1 |
| 46 | 7825-60-0000 | Rotation Sleeve Group (7/8" x 3-1/4") | 1 |
| | 7825-61-0000 | Rotation Sleeve Group (7/8" x 4-1/4") | 1 |
| | 7825-63-0000 | Rotation Sleeve Group (1" x 4-1/4") | 1 |
| 47 | 7825-60-114B | Rotation Sleeve (7/8" x 3-1/4") | 1 |
| | 7825-61-114B | Rotation Sleeve (1" or 7/8" x 4-1/4") | 1 |
| 48 | 7825-60-115D | Sleeve Bushing (7/8" x 3-1/4") | 1 |
| | 7825-61-115D | Sleeve Bushing (7/8" x 4-1/4") | 1 |
| | 7820-63-115D | Sleeve Bushing (1" x 4-1/4") | 1 |
| 49 | 7825-70-121A | Cap Nut | 2 |
| 50 | 7875-70-1230 | Through Bolt | 2 |
| 51 | 7825-80-000A | Front Head Group (7/8" x 3-1/4") | 1 |
| | 7825-81-0000 | Front Head Group (7/8" x 4-1/4") | 1 |
| | 7825-83-0000 | Front Head Group (1" x 4-1/4") | 1 |

| INDEX NO. | PART NO. | DESCRIPTION | QUAN. REQD. |
|-----------|--------------|---|-------------|
| 52 | 7825-80-340B | Front Head Assy. (7/8" x 3-1/4") (incl. 7825-80-141B 2 pcs.) | 1 |
| | 7825-81-140A | Front Head Assy. (1" or 7/8" x 4-1/4") (incl. 7825-80-141B 2 pcs.) | 1 |
| 53 | 7825-80-141B | Front Head Bushing | 2 |
| 54 | 7825-80-3320 | Steel Holder (7/8" x 3-1/4") | 1 |
| | 7825-80-132C | Steel Holder (7/8" x 4-1/4") | 1 |
| | 7825-83-132C | Steel Holder (1" x 4-1/4") | 1 |
| 55 | 7825-80-134C | Steel Holder Bolt | 2 |
| 56 | 7825-80-135C | Steel Holder Nut | 2 |
| 57 | 7898-03-010B | Steel Holder Camp | 2 |
| 58 | 7898-17-203A | Steel Holder Spring | 2 |
| 59 | 7825-80-138A | Steel Holder Pin | 1 |

FORMER TYPE

| | | | |
|----|--------------|--------------------------|---|
| 10 | 7825-01-008F | Hose Connection Tube | 1 |
| 11 | 7825-01-0090 | Hose Connection Cap | 1 |
| 12 | 7825-01-0110 | Hose Connection Gasket | 1 |
| 13 | 7898-03-2263 | Hose Connection Retainer | 1 |
| 14 | 9954-80-0210 | O-Ring 21 | 1 |

OPTIONAL PARTS FOR WET TYPE ROCK DRILL

| | | | |
|----|--------------|-----------------------------|---|
| 60 | 7825-10-0000 | Water Tube Group | 1 |
| 61 | 7825-10-031A | Water Tube Gland | 1 |
| 62 | 7825-10-0330 | Tube Gland Gasket | 1 |
| 63 | 7825-10-0340 | Tube Gasket | 1 |
| 64 | 7825-10-0350 | Tube Washer | 1 |
| 65 | 7825-10-0360 | Water Tube | 1 |
| 66 | 9954-80-0180 | O-Ring 18 | 2 |
| 67 | 7825-10-032F | Water Valve Piston | 1 |
| 68 | 9954-80-0030 | O-Ring 3 | 1 |
| 69 | 7898-17-0260 | Water Valve Spring | 1 |
| 70 | 7825-10-0380 | Valve Spring Retainer | 1 |
| 71 | 7825-10-039A | Water Valve Retainer Ring | 1 |
| 72 | 7825-10-041A | Water Valve Sheet | 1 |
| 73 | 7825-10-042B | Water Valve Sheet Retainer | 1 |
| 74 | 7896-01-000C | Water Hose Connection Group | 1 |
| 75 | 7896-01-5310 | Water Connection Tube I | 1 |
| 76 | 7896-01-0330 | Water Connection Tube II | 1 |
| 77 | 9954-80-0100 | O-Ring 10 | 1 |
| 78 | 7896-01-032A | Water Connection Nut | 1 |
| 79 | 7825-02-0140 | Set Screw Gasket | 1 |
| 80 | 7898-07-4010 | Water Hose | 1 |
| 81 | 7896-01-0040 | Hose Cap Band | 2 |
| 82 | 7896-01-5350 | Water Hose Stem I | 1 |
| 83 | 7896-01-036A | Water Hose Stem II | 1 |
| 84 | 9954-81-0520 | O-Ring 10520 | 1 |
| 85 | 9954-10-0901 | O-Ring 901 | 1 |
| 86 | 7896-01-034A | Water Hose Stem Cap | 1 |
| 87 | 7896-01-0100 | Water Connection Screen | 1 |
| 88 | 9954-80-0050 | O-Ring 5 | 1 |
| 89 | 7896-01-020B | Water Valve Assy. | 1 |