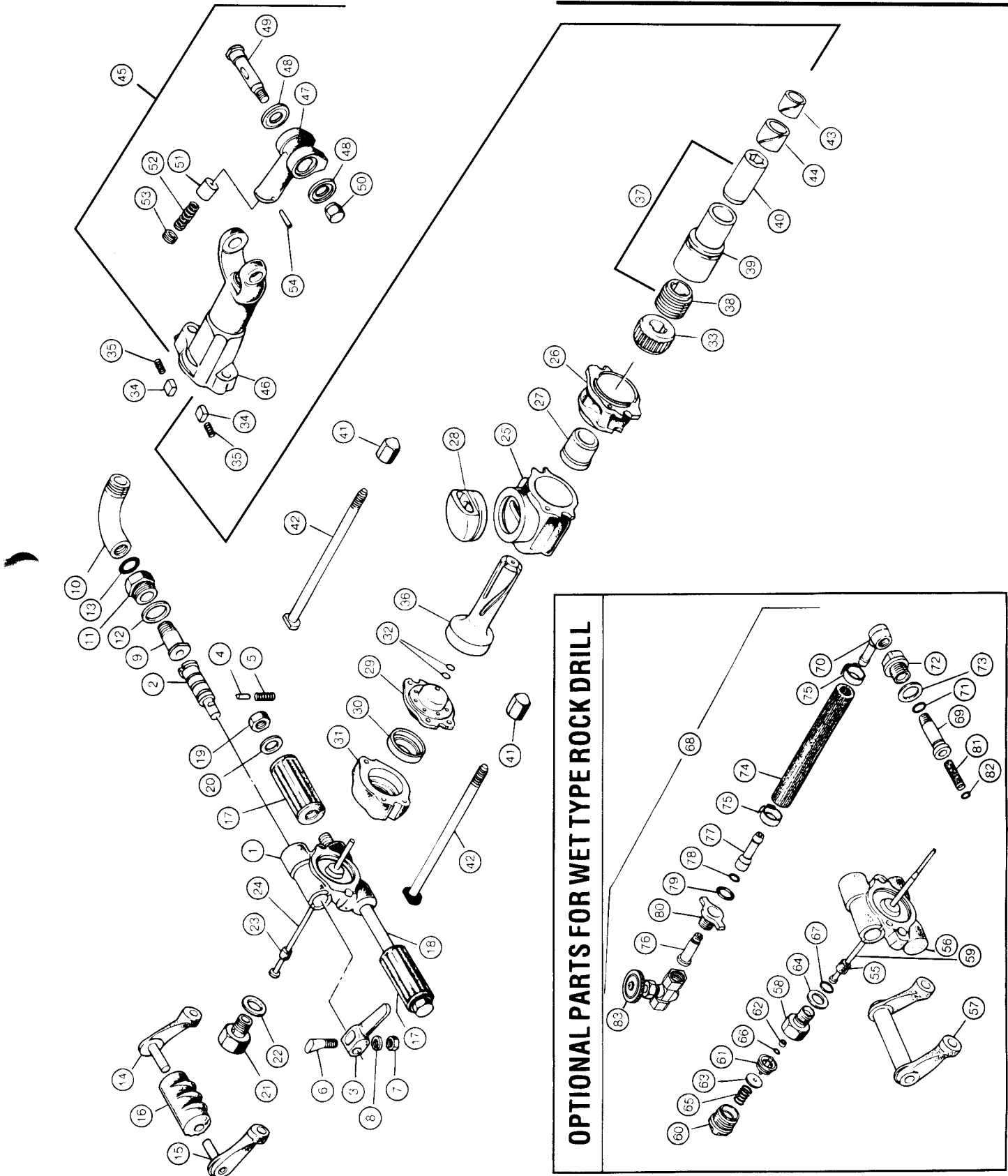


MODEL CRD-30

CONTINENTAL POWER TOOLS

ROCK DRILL



CONTINENTAL POWER TOOLS

MODEL CRD-30

ROCK DRILL

INDEX NO.	PART NO.	DESCRIPTION	QUAN. REQD.
1	7802-02-010E	Back Head	1
2	7802-01-002A	Throttle Valve	1
3	7801-01-003B	Throttle Valve Handle	1
4	7802-01-004A	Throttle Valve Plunger	1
5	7898-17-0880	Throttle Valve Spring	1
6	7825-01-0060	Throttle Valve Bolt	1
7	9913-23-5000	Throttle Valve Nut	1
8	9920-13-5000	Throttle Valve Washer	1
9	7802-01-0070	Swivel Connection	1
10	7802-01-0080	Air Connection Elbow	1
11	7802-01-0090	Air Connection Nut	1
12	7898-12-2160	Air Connection Washer	1
13	9954-10-2201	O-Ring 2201	1
14	7802-05-0200	Left Grip Support	1
15	7802-05-0300	Right Grip Support	1
16	7802-05-023B	Center Grip	1
17	7802-05-420B	Handle Grip	2
18	7801-05-523A	Handle Bolt	1
19	9913-65-0160	Handle Bolt Nut	1
20	9995-21-6000	Handle Bolt Washer	2
21	7812-11-0310	Blow Tube Gland	1
22	7898-12-2170	Tube Gland Gasket	1
23	7801-10-0340	Tube Gasket	1
24	7802-11-0360	Blow Tube	1
25	7802-21-050A	Cylinder	1
26	7802-20-069B	Front Washer	1
27	7802-20-068A	Front Washer Bushing	1
28	7816-20-0510	Exhaust Deflector	1
29	7802-30-0710	Valve Cover	1
30	7802-30-0730	Valve	1
31	7802-30-0750	Valve Chest	1
32	9954-80-0050	O-Ring 5	2
33	7802-42-086D	Ratchet Ring	1
34	7802-40-083D	Rotation Pawl	2
35	7898-17-0840	Pawl Spring	2
36	7802-52-303A	Piston	1
37	7802-60-0000	Rotation Sleeve Group (7/8" x 3-1/4")	1
	7802-61-0000	Rotation Sleeve Group (7/8" x 4-1/4")	1
38	7802-64-113E	Sleeve Nut	1
39	7802-65-114A	Rotation Sleeve (7/8" x 3-1/4")	1
	7802-68-114A	Rotation Sleeve (7/8" x 4-1/4")	1
40	7802-60-115D	Sleeve Bushing (7/8" x 3-1/4")	1
	7802-61-115D	Sleeve Bushing (7/8" x 4-1/4")	1
41	7806-70-1210	Through Bolt Nut	2
42	7802-70-1230	Through Bolt	2
43	7802-84-138A	Front Head Liner I	1
44	7802-84-139A	Front Head Liner II	1
45	7802-80-0000	Front Head Group (7/8" x 3-1/4")	1
	7802-81-0000	Front Head Group (7/8" x 4-1/4")	1
46	7802-85-1400	Front Head (7/8" x 3-1/4")	1
	7802-88-140A	Front Head (7/8" x 4-1/4")	1
47	7802-80-132B	Steel Holder	1
48	7802-84-133A	Steel Holder Packing	2
49	7802-84-1340	Steel Holder Bolt	1
50	7802-84-1350	Steel Holder Nut	1
51	7817-80-136A	Steel Holder Plunger	1

INDEX NO.	PART NO.	DESCRIPTION	QUAN. REQD.
52	7898-17-0870	Steel Holder Spring	1
53	7802-84-137A	Steel Holder Screw	1
54	7816-01-0230	Steel Holder Pin	1

OPTIONAL PARTS FOR WET TYPE ROCK DRILL

INDEX NO.	PART NO.	DESCRIPTION	QUAN. REQD.
55	7801-10-0340	Tube Gasket	1
56	7802-01-010E	Back Head	1
57	7802-05-425A	D-Handle	1
58	7802-10-031A	Water Tube Gland	1
59	7802-10-0360	Water Tube	1
60	7802-10-4390	Water Valve Cap	1
61	7817-10-032C	Water Valve Assy.	1
62	7817-10-041B	Water Valve Seat	1
63	7898-12-1350	Water Valve Washer	1
64	7898-12-2170	Tube Gland Gasket	1
65	7898-17-0220	Valve Spring	1
66	9954-10-0301	O-Ring 301	1
67	9954-80-0120	O-Ring 12	1
68	7896-01-000C	Water Hose Connection Group	1
69	7896-01-5310	Water Connection Tube I	1
70	7896-01-0330	Water Connection Tube II	1
71	9954-80-0100	O-Ring 10	1
72	7896-01-032A	Water Connection Nut	1
73	7825-02-0140	Set Screw Gasket	1
74	7898-07-4010	Water Hose	1
75	7896-01-0040	Hose Clamp Band	2
76	7896-01-5350	Water Hose Stem I	1
77	7896-01-036A	Water Hose Stem II	1
78	9954-81-0520	O-Ring 10520	1
79	9954-10-0901	O-Ring 901	1
80	7896-01-034B	Water Hose Stem Cap	1
81	7896-01-0100	Water Connection Screen	1
82	9954-80-0050	O-Ring 5	1
83	7896-01-020B	Water Valve Assy.	1