

**MODEL 125
CLAY DIGGER**

Tools Renewed Inc
Tel: 800-247-3639
Fax: 860-665-9821

Email: sales@toolsrenewed.com

The APT Model 125 Clay Digger can be used for digging clay, shale, hard pan, and frozen ground. The Model 125 is a lighter weight tool ideal for digging medium to lightly packed soil, for light demolition work as well as for tunneling around existing foundations. With its latch type retainer, lighter weight, and short length, this tool is one of the best and easiest to handle Clay Diggers made today.

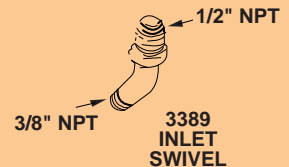
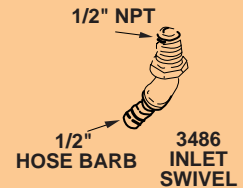
SPECIFICATIONS

Part Number	Chuck Size inches	Bore	Stroke	BPM	CFM @ 90 PSI inlet pressure	Weight lbs.	Length inches	Air Inlet NPT
5209	3/4 sq. x 2-3/4	1-11/16	2-3/4	2120	38-42	21	18-3/8	3/8 - Female
5210	7/8 hex x 2-3/4	1-11/16	2-3/4	2120	38-42	21	18-3/8	3/8 - Female
5211	7/8 hex x 3-1/4	1-11/16	2-3/4	2120	38-42	21	18-3/8	3/8 - Female



FEATURES

- D-style handle
- Inside trigger for better control and safety
- Flapper valve design allows dirt to pass without stopping tool
- Replaceable chuck and piston stem bushing
- Deep case-hardened drop forged alloy steel cylinders
- Replaceable chuck bushing
- Latch-type retainer

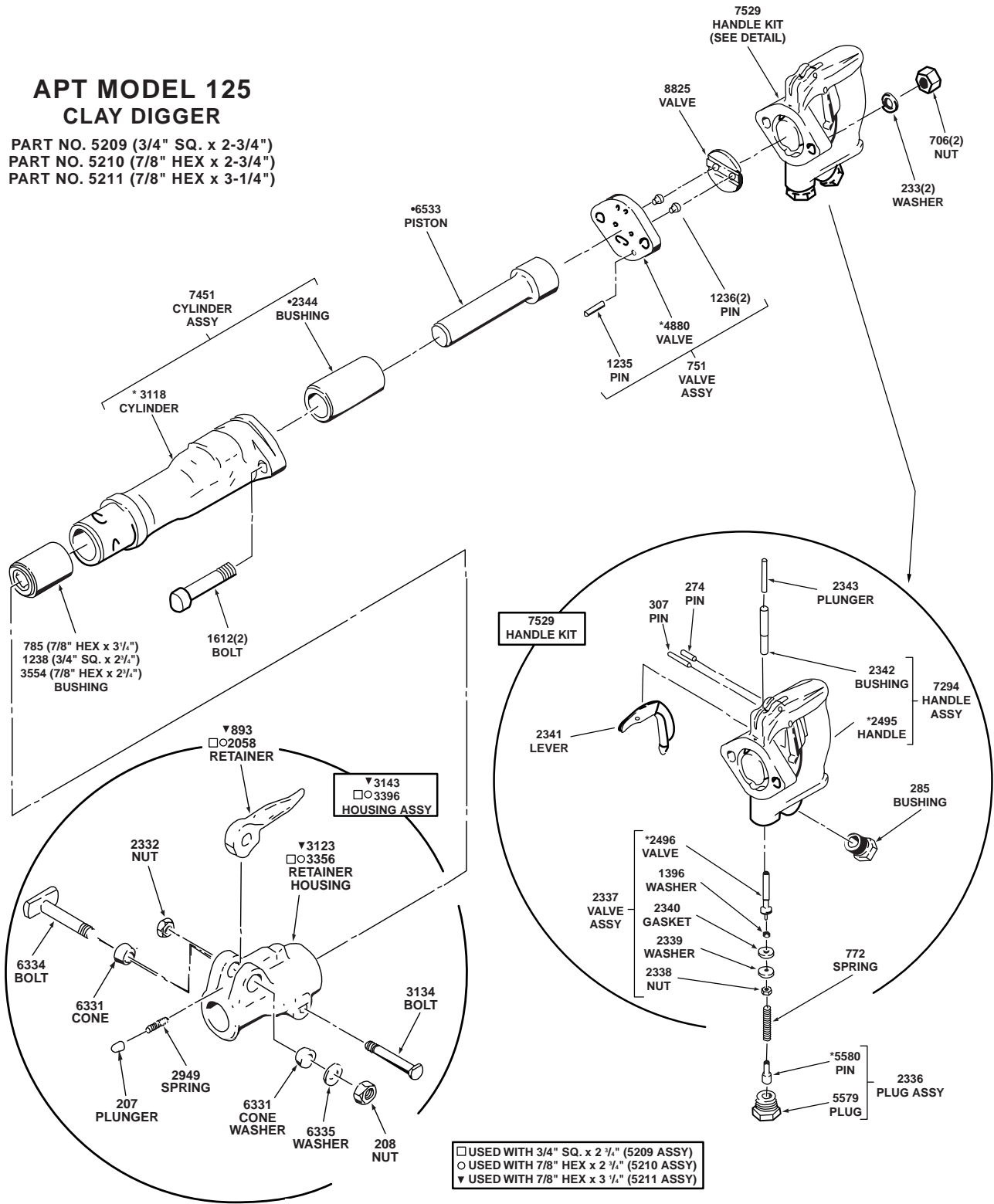


APT

AMERICAN PNEUMATIC TOOL

APT MODEL 125 CLAY DIGGER

PART NO. 5209 (3/4" SQ. x 2-3/4")
 PART NO. 5210 (7/8" HEX x 2-3/4")
 PART NO. 5211 (7/8" HEX x 3-1/4")



□ USED WITH 3/4" SQ. x 2 1/4" (5209 ASSY)
 ○ USED WITH 7/8" HEX x 2 3/4" (5210 ASSY)
 ▼ USED WITH 7/8" HEX x 3 1/4" (5211 ASSY)

Tools Renewed Inc
 Tel: 800-247-3639
 Fax: 860-665-9821
 Email: sales@toolsrenewed.com

* FOR REFERENCE ONLY
 (THESE PARTS NOT SOLD SEPARATELY)

